

## MANUAL OF LED T8 TUBE LIGHT

(Non-Isolated Driver)




### I. Main Features

1. Energy saving up to 60% in electricity consumption compared with traditional fluorescent tube light.
2. Environment friendly, no UV or infrared radiation, mercury free.
3. Instant on/off without delay, even light distribution, no color degradation, flicker-free.
4. Three types of PC covers available – Frosted, Stripe and Clear covers.
5. Options for T8 tubes with isolated driver and non-isolated driver.
6. Easy installation, ideal for direct replacement of T8 fluorescent tubes.
7. Maintenance free, extra long lifespan of over 50,000 hours
8. Suitable for applications in office, supermarket, hotel, school, hospital and warehouse.

### II. Technical Specifications

Tube Length.	600mm / 2 Ft			900mm / 3Ft			1200mm / 4 Ft		
Model No.	TA-TL0600-09T8N			TA-TL0900-14T8N			TA-TL1200-20T8N		
Order No.	TA-TL0600-09T10N-WW	TA-TL0600-09T10N-PW	TA-TL0600-09T10N-CW	TA-TL0900-14T10N-WW	TA-TL0900-14T10N-PW	TA-TL0900-14T10N-CW	TA-TL1200-20T10N-WW	TA-TL1200-20T10N-PW	TA-T1200-20T10N-CW
Tube Size	Φ 26×600mm			Φ 26×900mm			Φ 26×1200mm		
Power	9W			14W			18W		
Input Power	90-265VAC 50/60Hz								
Light Source	48pcs(Epistar 2835)			72pcs(Epistar 2835)			96pcs(Epistar 2835)		
CCT	2700-3700K	4000-5300K	5500-6700K	2700-3700K	4000-5300K	5500-6700K	2700-3700K	4000-5300K	5500-6700K
Luminous Flux	800-1000 lm			1200-1500 lm			1700-2000 lm		
CRI (Ra)	≥70								
PF	≥0.9								
Mount Base	G13								
Beam Angle	160°								
Working Temperature	-20°C~50°C(10%~90%RH)								
Housing Material	Aluminum & PC Cover								
LED Lifespan	≥50,000 hrs								

Net Weight	220g	330g	380g
Package	25pcs/Carton Volume: 650*270*270mm	25pcs/Carton Volume: 950*270*270mm	25pcs/Carton Volume: 1250*270*270mm
Certificate			

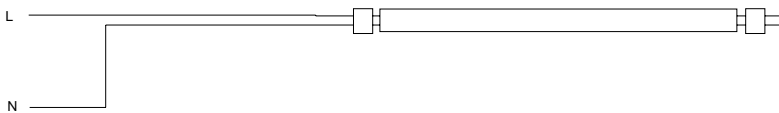
### III. Installation Instruction

#### Single-End-Power-Input LED Tube Light

#### 單端通電燈管佈線圖

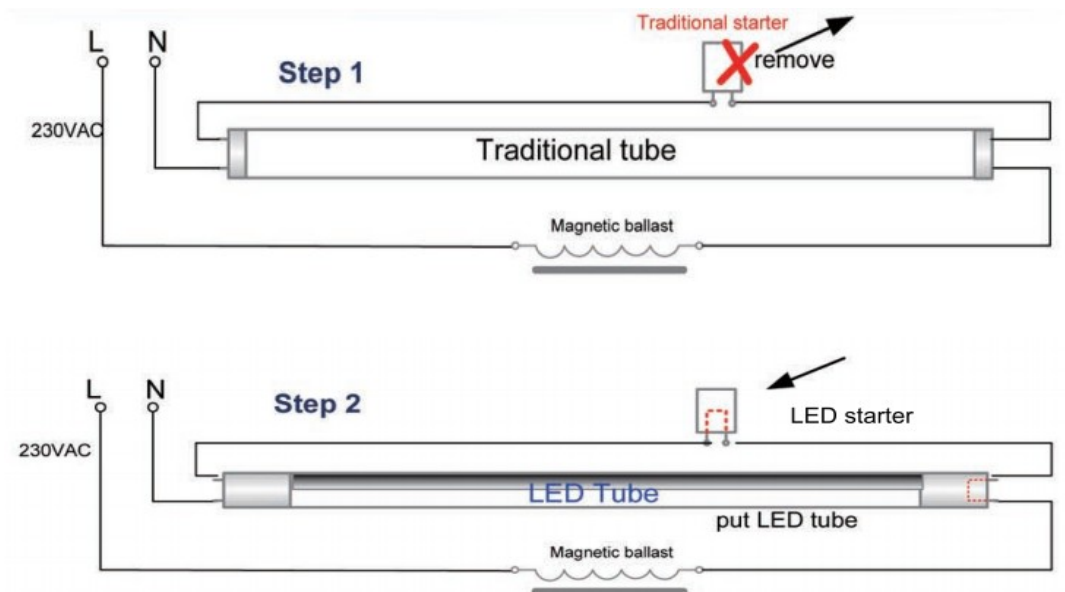
LED Tube Light Wiring Diagram:  
LED 燈管佈線圖:

AC 85-265V Power Input



Installation instructions:  
安裝指南:

- 1) Turn off the electricity supply before installation .  
安裝前請斷開燈座上的電源，嚴禁帶電操作。
- 2) For refitting old fluorescent lamp with a **single-end-power-input** LED tube, please remove the traditional tube  
當用單端通電LED燈管替代時，取下螢光燈管



- 3) For diagram with magnetic ballast & starter, please replace the old starter with LED starter first. Now you can put on the LED tube and turn it on.

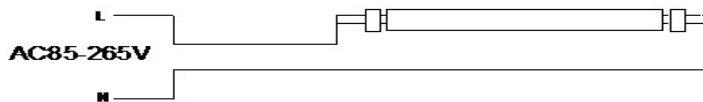
對於使用電感鎮流器的線路,如上圖所示:取下啟輝器後裝上 LED 啟輝器(連接作用),LED 燈管可安裝在原來的 G13 燈座上直接使用

## Two-End-Power-Input LED Tube Light

### 雙端通電燈管佈線圖

LED Tube Light Wiring Diagram:

LED 燈管佈線圖:



Installation instructions:

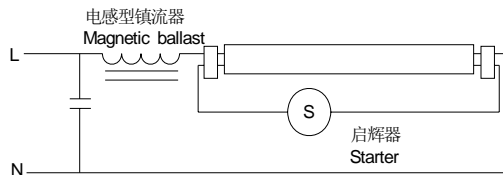
安裝指南:

- 1) Turn off the electricity supply before installation .

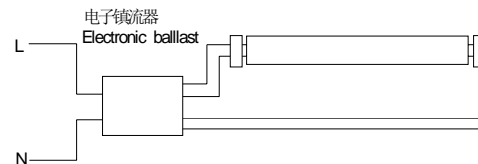
安裝前請斷開燈座上的電源,嚴禁帶電操作。檢查原來螢光燈燈座線路是否符合圖 A1,B1 請按照插圖所示步驟調整。

- 2) For refitting old fluorescent lamp, with a **two-end-power-input** LED tube, please re-connect your wire as the following diagram.

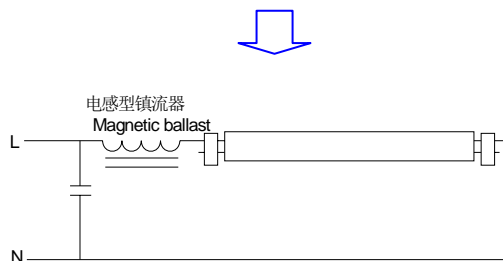
當用雙端通電 LED 燈管替代時,請按照下面 A2 或 B2 電路重新接線



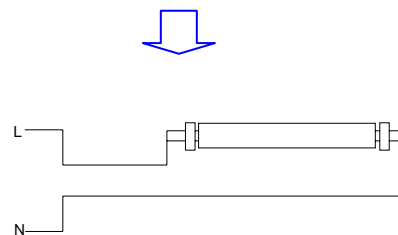
A1



B1



A2



B2

- 3) For diagram A1 loop with magnetic ballast & starter, after removing the starter, LED tube can be installed directly into the G13 base. Then LED tube light is ready to work. And the loop has been changed from A1 to A2.

對於使用電感鎮流器的線路,如 A1 所示: 取下啟輝器後 LED 燈管可安裝在原來的 G13 燈座上直接使用。此時線路改變為 A2。

- 4) You can just keep the magnetic ballast as it was. However, it'll consumer some power. For saving energy, it's still suggested to cut it out if your labor cost is not so high.

電感鎮流器可以保留不動。但它會仍然耗電，如重新接線人工成本不高，建議剪除鎮流器，將其兩端的線接通即可。

- 5) For diagram B1 loop with electronic ballast , please remove the electronic ballast first. Then connect L and N to the two sockets of the G13 base separately. Now your LED tube light is ready to be turned on. And the loop has been changed into the one showed in diagram B2.

對於使用電子流器的線路，如 B1 所示，需移除鎮流器，然後將兩條輸入電線分別接在 G13 燈座兩端上，此時線路改變為 B2。

#### IV. Applications



Application Instance



**T&A** - Smart LED Lighting Solution